



Organizational Chart
rev. 02/13/2024

Dr. Joyce Loveday
President

Thomas Oliver
Senior Executive Assistant

Amelia Grayson
Vice President for
Finance & Administration

Dr. James Neblett
Associate Vice President
for Humans Resources &
Culture

Dean Kelly
Vice President for
Student Success

Iesha Valencia
Associate Vice President for
Equity, Diversity & Inclusion

Samantha Dana
Associate Vice President for
Institutional Effectiveness

Dr. Tom Broxson
Vice President for
Instruction

- Budget & Finance
- Campus Security
- ctcLink
- Information Technology
- Risk & Compliance
- Campus Bookstore
- Capital Projects
- Event Services
- Operations

- Human Resources
- Payroll

- Advising & Counseling
- College Success
- Disability Services
- Outreach & Entry Services
- Student Life
- Testing & Reporting
- Workforce Development
- Child Development Services
- Community & Career Services
- Enrollment Services
- Student Aid & Scholarships
- Student Rights & Responsibilities
- Veterans Services

- Inclusive Excellence & Belonging
- MOSAIC Center

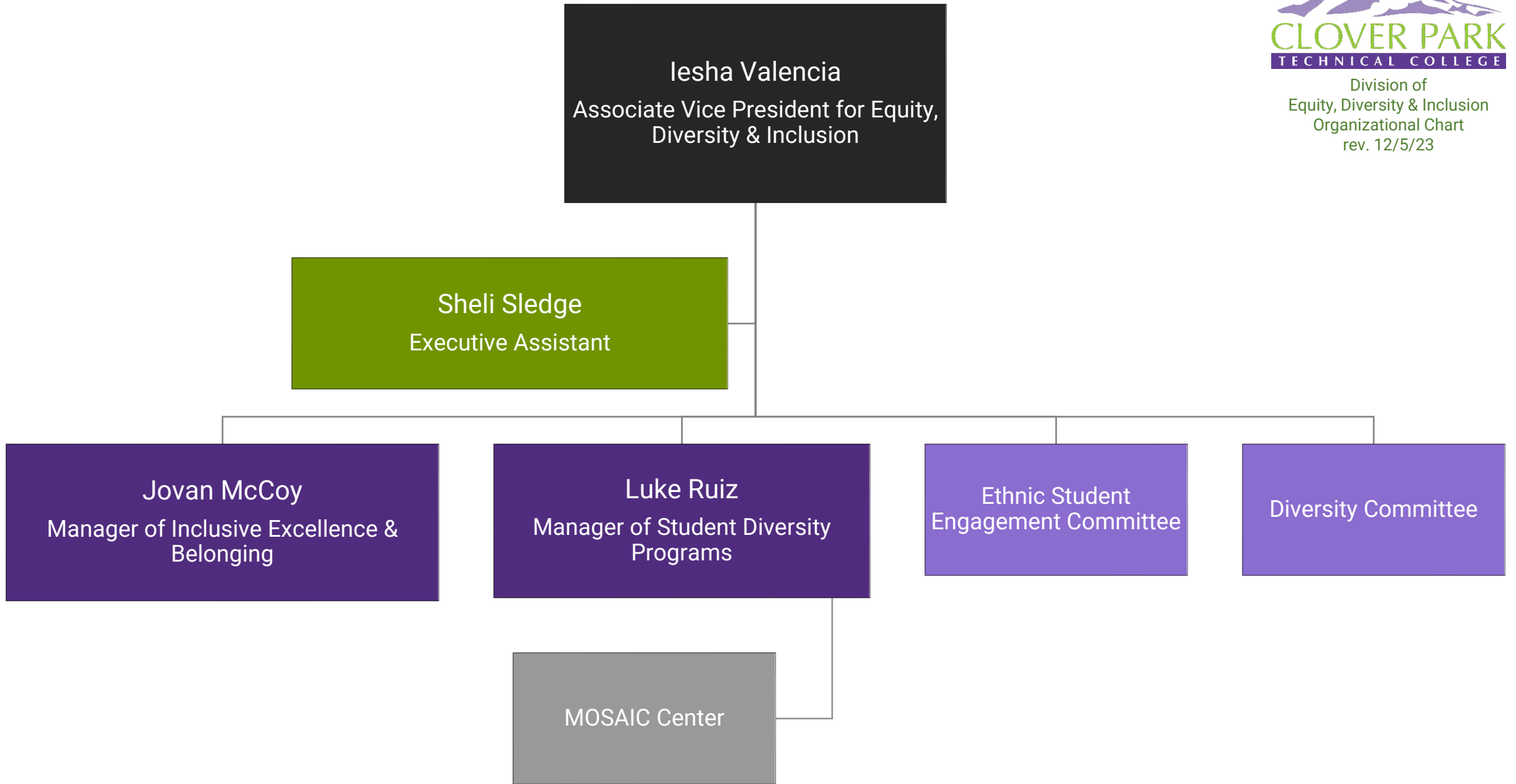
- Accreditation
- CPTC Foundation
- Grant Development
- Institutional Research
- Marketing & Communications

- School of Advanced Manufacturing
- School of Automotive & Trades
- School of Health & Human Development
- School of Science, Technology, Engineering & Design
- Learning Resource Center
- Outcomes & Assessment
- School of Aerospace and Aviation
- School of Business & Personal Services
- School of Nursing
- Pre-College Pathways
- Teaching & Learning Center

Board of Trustees
Tong Zhu (Chair); Carol Mitchell; Alice Phillips; Jesus Villegas Rivera; Eli Taylor;

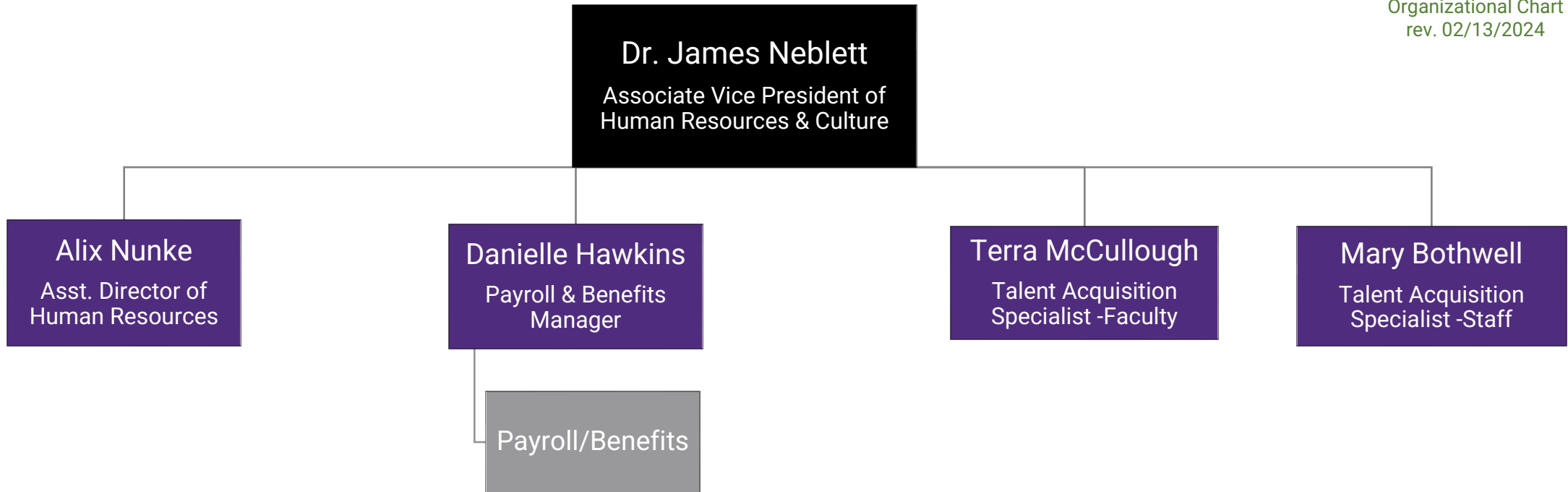


Division of
Equity, Diversity & Inclusion
Organizational Chart
rev. 12/5/23



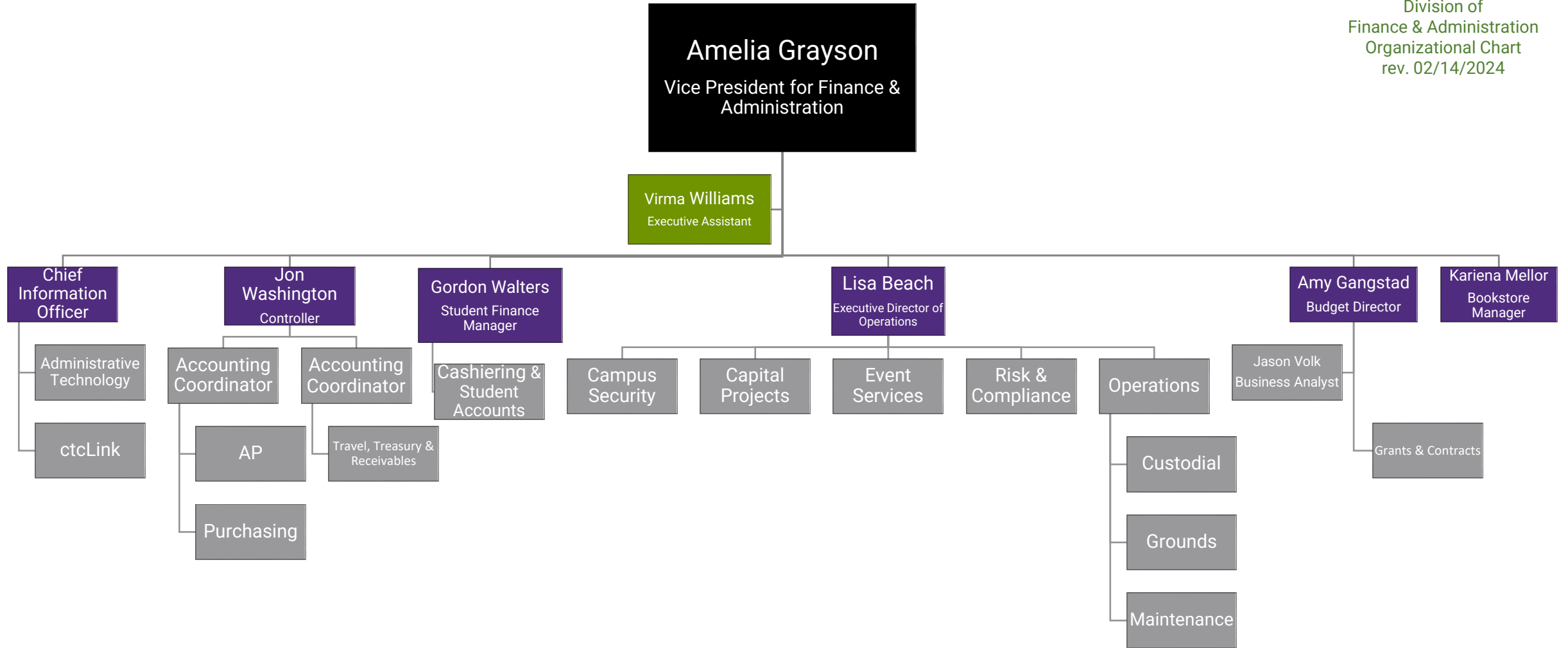


Division of
Human Resources & Culture
Organizational Chart
rev. 02/13/2024



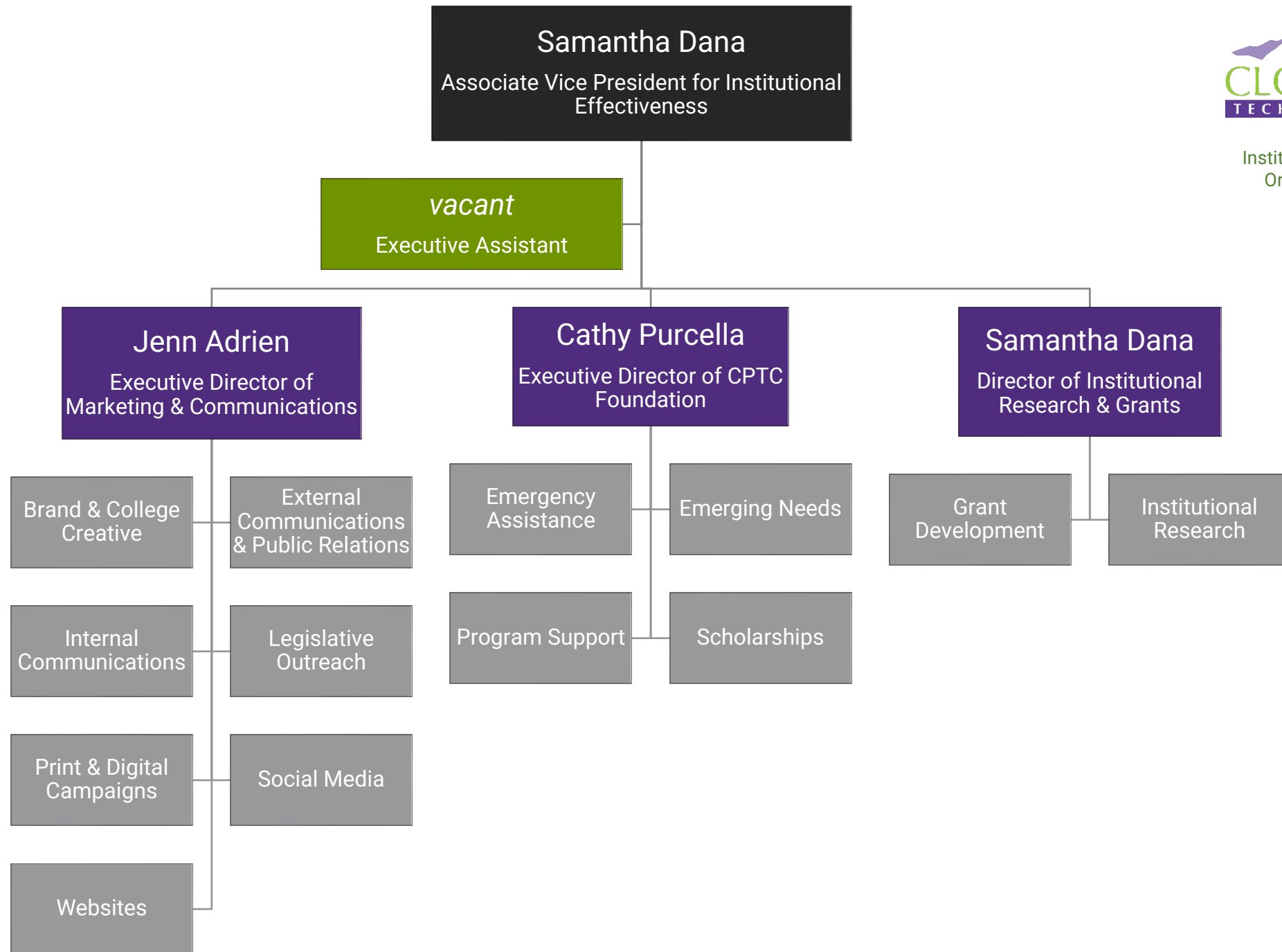


Division of
Finance & Administration
Organizational Chart
rev. 02/14/2024





Division of
Institutional Effectiveness
Organizational Chart
rev. 12/5/23





Division of
Student Success
Organizational Chart
rev. 12/5/23

Dean Kelly
Vice President for Student Success

Nathan Sharkey
Executive Assistant

Tech Systems
(EAB/CRM, ctcLink)

Cindy Mowry
Associate Dean of Student Success
(Student Enrollment)

Dean Kelly
Dean of Student Success
(Student Engagement & Completion)

Cristeen Crouchet
Dean of Student Success
(Student Career & Financial Services)

Enrollment Services

Outreach & Entry
Services

Testing & Reporting

Advising &
Counseling

Child Development
Services

College Success

Disability Services

Student Life

Student Rights &
Responsibilities

Career & Community
Services

Student Aid &
Scholarships

Veterans Services

Workforce
Development

Vice President for Instruction
Dr. Thomas Broxson



Division of Instruction
Organizational Chart
rev. 12/5/23

Director of Teaching & Learning
Kristin Copeland
Curriculum Design Specialists:
Geoff Cain, Ronald Lethcoe
Instructional Program Assistant:
Carrie Foster

**Outcomes & Assessment
Manager**
Dr. Xue (Snowy) Zhang

Executive Assistant
Sarah Harris

**Enrollment Data
Specialist**
Kristy Crosby

**ctcLink Data
Analyst**
vacant

**LEARNING RESOURCE
CENTER DIRECTOR:**
TBD
LRC Coordinator
vacant

**ACADEMICS & DESIGN
Dean of Instruction**

Dr. Chris Chen
Mahoney

**AERO / AVIA /
MAIN / TECH
Dean of Instruction**
Dr. Claire
Korschinowski

**AUTO & TRADES
Dean of Instruction**

Lester Burkes

**CLIENT & BUSINESS/
PERSONAL SERVICES
Dean of Instruction**

Michelle Hillesland

**HEALTH CARE
Dean of Instruction**

Jason Boatwright

**NURSING
Dean of Instruction**

Tiffany Smith-Fromm

**PRE-COLLEGE
PATHWAYS
Dean of Instruction**

Jenna Pollock

LRC Staff
Faculty librarians
eLearning staff
Library Technicians
Computer Technology
Specialist
Tutoring Center staff

**Instructional
Program
Assistants**
Laurie Albrecht
Roxanne Sou

**Instructional
Program Assistants**
Maurie Kerns
Donna McBride (South
Hill Campus)

**Instructional
Program
Assistant**

Dawn Schuler

**Instructional
Program
Assistant**

Bijou Boerst

**Instructional
Program
Assistant**

Christina Fontana

**Instructional
Program
Assistant**

Sean McCullough

**Instructional
Program
Assistants**
Brittany Bowman
Karina Calzada

Programs
Arts & Humanities
Computer Applications
English &
Communications
Mathematics
Social Sciences
DTA degrees

Architectural
Engineering Design
Digital Entertainment
Design & Production
Graphic Technologies
Interior Design
BAS Interior Design

Programs
BAS Cybersecurity
Computer Prog.
Environ.Sci. & Tech.
Network Ops/Syst Sec

Aviation Maintenance
Avionics
Professional Pilot
BAS Op. Management
BAS META
Mechatronics
Nondestructive Testing
Manufacturing Tech.

SHC Support Staff
Tool Room Tech:
Lucy Schmidt
Aircraft Mechanic: Matt
Selstad
Avia. Prog. Specialist:
Terrie Shanko

**Adv. Manufacturing
Instruction/Lab Support
Tech: TBD**

BAS Program Support
Career Pathway
Specialist: Kristen Bate

Programs
Auto Collision/
Restoration
Automotive Tech.
Construction Tech.
Low Voltage
Electrician
HVAC/Refrigeration
Service Tech.
Upholstery
Welding
Apprenticeship
Development
Perkins

**Automotive Support
Staff**
Tool Room Tech: Jim
Newcomer

Programs
Accounting
Cosmetology
Culinary Arts
Esthetic Science
Massage Studies
(inactive)
Pastry Arts

Retail Bus. Mgmt.
Early Care & Education
Day-care affil's

Support Staff
Receptionist:
Kim Brown
Cashier:
Michelle Bishop

Programs
Central Service/Sterile
Processing
Dental Assistant
Health Unit Coord.
Human Services
Med. Histology Tech.
Medical Lab Tech.
Pharmacy Tech.
Medical Assistant
Surgical Tech.
Core Allied Health

Support Staff
Clinical Placement
Coordinator:
Josie Meyer
Histology lab tech
Pharmacy lab tech
Surg. Tech lab
assistant

Programs
Nursing Assistant
Practical Nursing
Registered Nursing

Support Staff
Nursing Placement
Coord.: Judy Rose-
Bungay (PT)
NAC Coordinator
(adjunct)

Programs
Adult Basic Education
English Language
Acquisition (formerly
ESL)
GED
HS + DIPLOMA
I-BEST

Support Staff
Assessment/Data
Specialist:
Samantha Roman
I-Best Program
Specialist/ABE
Navigator:
Felicia Dennis
Assessment/
Data Tech.: Eun Ha Lee

**NORTHWEST CAREER
& TECHNICAL HIGH
SCHOOL (NWCTHS)
Director**
Lester Burkes

Support Staff
Faculty Office Asst.:
TBD
PT Office Support:
Gretchen Engle